

Exceptional Performance by Design



We are QCC:

QUALITY COMPONENTS COMPANY

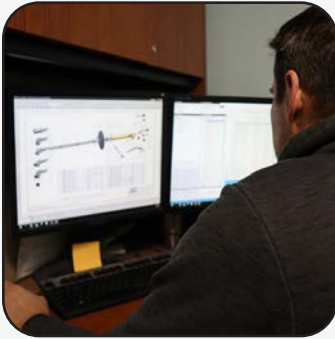
At **QCC**, we strive to make oxy-fuel industry products better and more efficient.

From our humble beginnings as a torch and equipment repair shop to becoming the premier source of torches, tips and other cutting and welding equipment, quality has remained at the forefront on our quest to become the leader of the oxy-fuel industry.

That is why **quality** is in our name.

UNRIVALED SERVICE AND SUPPORT.

Whether it be new installs, refits or setting up preventative maintenance guidelines, QCC is committed to our customers with the ability to solve challenging problems through experienced technical services and continuous improvement.



ENGINEERING

Our products and services are designed in-house around your specific needs with commitment to quality beyond standard. We use the latest software, technology and machine improvements to develop a total system solution for you, our customer.



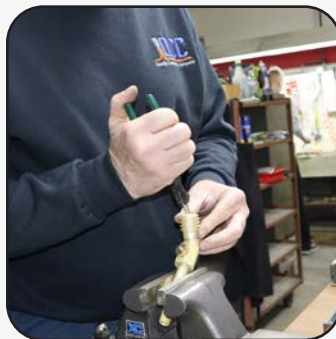
MAINTENANCE

QCC also offers in-house maintenance, inspection, refit or rebuild of torches and more. We have the capability to rework all our products to like new condition. Experienced technicians are available to disassemble, clean, rebuild and test used products.



TROUBLESHOOTING

Our team can also help if you are experiencing poor performance in your cutting process, causing your torches and tips to malfunction. Our technicians can travel to your facility, if necessary, to perform diagnostics to render sound evaluations and solutions to your specific problems.



CUSTOMIZATION

Everything we carry and supply is manufactured in-house by our team of highly skilled technicians. This provides us with the ability to modify and fine-tune our products for any application. Contact our team today to learn more about our customization capabilities.

TABLE OF CONTENTS

Handheld Cutting Torches.....	4
Powder Cutting Torches.....	6
Scarfig Torches.....	6
Machine Cutting Torches.....	7
Handheld Cutting Tips	9
Powder Cutting Tips	11
Scarfig Tips	11
Machine Cutting Tips	12
Thermite Heating Tips	14
Portable Track Cutting Machines	15
Gas Distribution Systems.....	18
Flowmeters.....	21
Powder Dispensers.....	21
Industries	22
End Uses	23

Quality Components Company
8825 East Avenue
Mentor, OH 44060

HANDHELD CUTTING TORCHES

3000 SERIES



These 3000 Series cutting torches are our version of the industry standard. Flowing over 2,000 CFH, QCC's 3000 Series handheld cutting torches are built with high-quality components to ensure long-lasting performance for years of dependable service and are available with a variety of options.

FEATURES

- Recommended cutting range is up to 16"
- Mid-body trigger-style lever is located on bottom
- Tip mix design provides medium flow rates while reducing flashbacks and maintenance costs
- No internal mixer to plug or burn out
- Medium capacity flows over 2,000 CFH of oxygen
- Balanced design maximizes speed and efficiency
- Corrosion-resistant stainless steel head and tubes
- Triangular three-tube design increases stability
- Bar stock rear body increases durability
- Include standard "B" and "C" hose fittings

OPTIONS

- Choose any length from 24" to 216"
- Select a head angle of 180°, 90° or 75°
- Come with or without a skid

APPLICATIONS

- 229 Series handheld cutting Tips

For more model information —
call 440.255.0606 or visit qccmfg.com

4000 SERIES



QCC's 4000 Series cutting torches are comparable to our competitor's heavy-duty style cutting torches. This series of handheld torches has a 4,000 CFH flow capacity, is built with high-quality components, can be custom ordered in any length from 24" to 216" and is available with a wide variety of different options.

FEATURES

- Recommended cutting range is up to 36"
- Trigger-style lever located on the bottom mid-body
- Tip mix design provides large flow rates while reducing flashbacks and maintenance costs
- No internal mixer to plug or burn out
- Large capacity flows over 4,000 CFH of oxygen
- Balanced design maximizes speed and efficiency
- Corrosion-resistant stainless steel head and tubes
- Triangular three-tube design increases stability
- Bar stock rear body increases durability
- Include standard "B" and "C" hose fittings

OPTIONS

- Choose any length from 24" to 216"
- Select a head angle of 180°, 90° or 75°
- Come with or without a skid

APPLICATIONS

- 136/149 Series handheld cutting tips
- 140 & 240 Series handheld cutting tips

For more model information —
call 440.255.0606 or visit qccmfg.com

HANDHELD CUTTING TORCHES

5700 SERIES



QCC's unique 5700 Series cutting torches combine the torch heads and tubes from our 4000 Series torches with the tail assemblies from our 7000 Series torches. This one-of-a-kind combination not only maximizes durability in the field, but it also provides a 5,000 CFH flow capacity. Available with a wide variety of options.

FEATURES

- Recommended cutting range is up to 36"
- Thumb-operated lever located on the top rear-body
- Tip mix design provides greater flow rates, reduces maintenance and improves safety
- Large capacity flows over 5,000 CFH of oxygen
- Corrosion-resistant stainless steel head and tubes
- Triangular three-tube design adds strength and rigidity
- Lightweight body enhances speed, efficiency and comfort
- Heavy-duty bar stock rear body increases durability
- Include standard "B" and "C" hose fittings

OPTIONS

- Choose any length from 24" to 216"
- Select a head angle of 180°, 90° or 75°
- Optional full-length aluminum or stainless steel handle
- Available in 2 or 3 hose configurations
- Come with or without a skid
- Available with or without a heat shield

APPLICATIONS

- 136/149 Series handheld cutting tips
- 140 & 240 Series handheld cutting tips

6000 & 7000 SERIES



QCC's 6000 Series and 7000 Series cutting torches provide maximum flow capacity for cutting material up to 60" thick. These extreme-duty handheld torches have an extra-large 6,000 CFH flow capacity, are perfect for applications requiring a massive amount of cutting power and are available with a variety of options.

FEATURES

- Recommended cutting range is up to 60"
- 6000 Series has a finger operated lever on bottom rear
- 7000 Series has a thumb operated lever on top rear
- Tip mix design allows for greater flow rates while enhancing safety and maximizing versatility
- No internal mixer to plug or burn out
- Extra-large capacity flows over 6,000 CFH of oxygen
- Corrosion-resistant stainless steel head and tubes
- Rigid triangular three-tube construction
- Heavy-duty bar stock rear body increases durability
- Include standard "B" and "C" hose fittings

OPTIONS

- Choose any length from 24" to 216"
- Select a head angle of 180°, 90° or 75°
- Optional full-length aluminum or stainless steel handle
- Available in 2 or 3 hose configurations
- Come with or without a skid
- Available with or without a heat shield

APPLICATIONS

- 213 & 313 Series handheld cutting tips

For more model information —
call 440.255.0606 or visit qccmfg.com

POWDER CUTTING TORCHES

4900 SERIES



Powder cutting 4900 Series torches supply iron powder through a specially designed powder nozzle to enable cutting stainless steel, nickel, cast iron and other non-ferrous materials. As a result, the torches make quick work of materials that would otherwise be difficult or impossible to cut.

FEATURES

- Recommended cutting range is up to 24"
- Improved design dispenses powder around the tip to prevent tip wear and increase service life
- Exclusive multi-jet powder head cuts in all directions
- Balanced body enhances operator comfort, speed and efficiency
- Upgraded stainless steel head and tubes prevent corrosion
- Three-tube triangular design increases rigidity

OPTIONS

- Choose any length from 24" to 216"
- Select a head angle of 180°, 90° or 75°
- Available with or without a heat shield
- Come with or without a skid

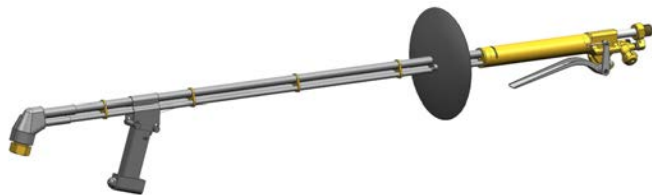
APPLICATIONS

- 140 Series powder cutting tips

For more model information —
call 440.255.0606 or visit qccmfg.com

SCARFING TORCHES

6000 & 7000 SERIES



Based on our 6000 Series and 7000 Series torches, these scarfing torches are designed to meet the varied requirements for the removal of defects and for the surface conditioning of steel. The optional rod feed device has been developed, refined and incorporated into the torch design to make it the most reliable and serviceable scarfing torch in the industry.

FEATURES

- Tip mix design allows for greater flow rates while enhancing safety and maximizing versatility
- No internal mixer to plug or burn out
- Ultra-durable head has increased wear protection
- Extra high-capacity flows over 6,000 CFH of oxygen
- Lightweight and well-balanced design increases operator comfort and efficiency
- Corrosion-resistant stainless steel head, tubes and lever
- Triangular three-tube arrangement enhances stability and rigidity
- Two-hose design reduces operator fatigue

OPTIONS

- Choose any length from 24" to 216"
- Come with a 75° head angle
- Available with or without a heat shield
- Exclusive design option available with either a top or bottom mounted lever

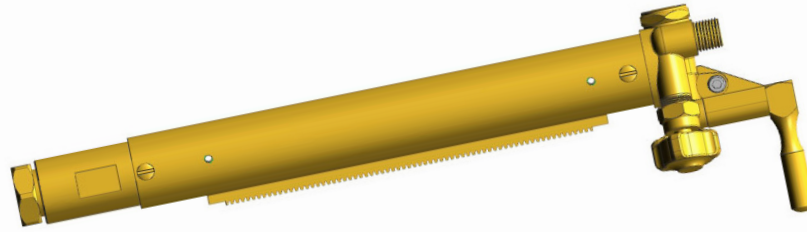
APPLICATIONS

- 250 Series scarfing tips

For more model information —
call 440.255.0606 or visit qccmfg.com

MACHINE CUTTING TORCHES

524 SERIES



For use in all types of applications from normal to heavy machine cutting, our 524 Series tip mix cutting torches are built using high-quality components to reduce maintenance and eliminate down time. They feature positive pressure with fuel gas and preheat oxygen mixed in the cutting tip for greater flow rates.

FEATURES

- Two hose models have a cutting range up to 15"
- Three hose models have a cutting range up to 30"
- Tip mix design allows for greater flow rates while enhancing safety and maximizing versatility
- No internal mixer to plug or burn out
- High capacity: three hose model can flow over 4,000 CFH of oxygen
- Stainless steel internal components prevent corrosion
- 1 $\frac{3}{8}$ " diameter brass barrel

OPTIONS

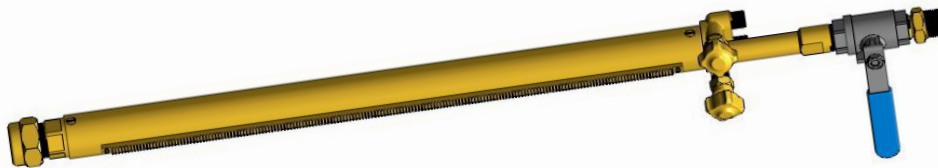
- Choose either 10" or 20" length
- Optional 32-pitch rack is ready for mounting on machine
- Available in 2 or 3 hose configurations

APPLICATIONS

- 139 Series machine cutting tips
- 140 Series machine cutting tips

For more model information —
call 440.255.0606 or visit qccmfg.com

80 SERIES



QCC's 80 Series "Jumbo" machine cutting torches are ideal for use in high-capacity applications that perform heavy-duty straight or contour plate cutting. Used for automated cutting, these torches feature a positive pressure, pre mix design where oxygen and alternate fuels are mixed in the head of the torch.

FEATURES

- Recommended cutting range of 8" to 25"
- Solid brass head for maximum strength
- Cutting oxygen features a ball valve lever
- Internal mix design provides a more efficient cutting flame
- Extremely heavy preheat makes quick work of heavy duty cutting applications
- High capacity flows over 4,000 CFH of oxygen
- 1 $\frac{3}{8}$ " diameter brass barrel

OPTIONS

- Choose either 10" or 20" length
- Optional 32-pitch rack is ready for mounting on machine
- Available in 2 or 3 hose configurations

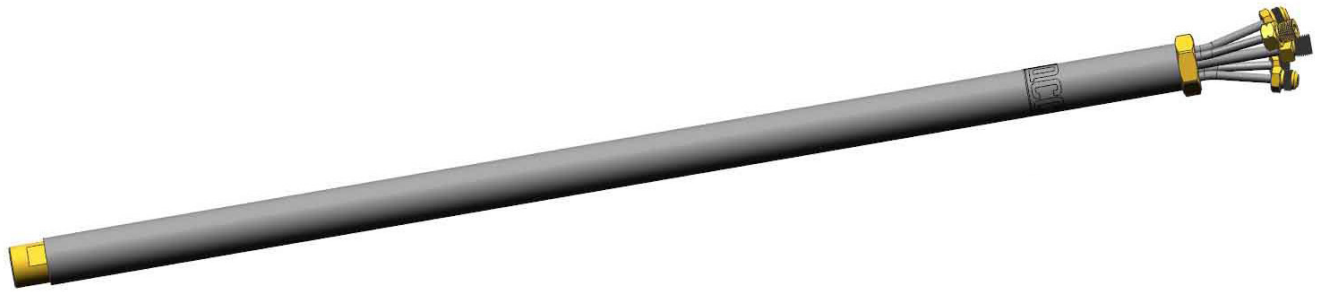
APPLICATIONS

- 8090 Series machine cutting tips

For more model information —
call 440.255.0606 or visit qccmfg.com

MACHINE CUTTING TORCHES

QC SERIES



Engineered for use in caster cutoff systems, these post mix QC Series machine cutting torches cut billets, blooms and slabs up to 70" thick. Featuring one of our patented QC Series post mix cutting tips, these torches are specially designed to be the most effective and efficient post mix cutting torches in the industry.

FEATURES

- Recommended cutting range is up to 70"
- Patented design is exclusive to QCC
- Improved flow rate reduces cutting time by burning faster and more efficiently
- Thru-flow design eliminates disruptions in passages for more efficient gas flow
- Stainless steel tubes improve flow, stronger than brass
- Heavy-gauge stainless steel torch barrels available in 1 $\frac{3}{8}$ ", 2" and 3" diameters

OPTIONS

- 1 $\frac{3}{8}$ " diameter barrels available in lengths up to 36"
- 2" and 3" diameter barrels available in lengths up to 84"
- Available air cooled or water cooled

APPLICATIONS

- QC Series machine cutting tips

QCC'S PATENTED CASTER CUTTING EQUIPMENT CAN CUT MATERIAL THICKNESSES OVER 70"



IMPROVE FLOW RATE

High-grade, specially machined components deliver improve flow rates and unrivaled reliability



INCREASE CUT SPEED

Patented caster technology reduces cutting time by burning faster and more efficiently



ELIMINATE DISRUPTIONS

Exclusive design eliminates interruptions in the cutting process for less down time

HANDHELD CUTTING TIPS

229 SERIES



QCC's 229 Series cutting tips are engineered to deliver heavy preheat. They feature a tip mix design, two-piece construction with a brass internal and copper external and can cut through material thicknesses up to 12". For use with propane, natural gas and other alternate fuels.

FEATURES

- Cut through thicknesses ranging from 6" to 12"
- Two-piece design with brass internal and copper external
- Internal straight bore design
- Precision-machined 26° V-shape splines improve heat transfer

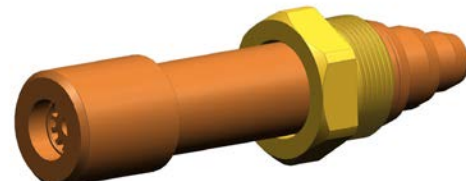
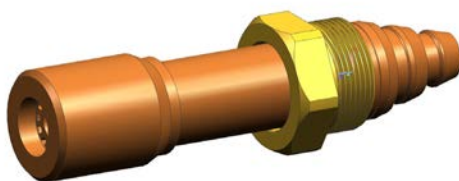
APPLICATIONS

- 3000 Series handheld cutting torches

For more model information —
call 440.255.0606 or visit qccmfg.com

Tip Series	Tip Size	Depth of Cut	Oxygen (PSIG)	Fuel Gas (PSIG)	Oxygen Flow (CFH)	Natural Gas Flow (CFH)
229	6	6"	55-65	8-10	600	35
229	8	8"	60-70	9-11	900	42
229	10	10"	65-75	10-13	1,350	47
229	12	12"	70-85	12-15	1,950	52

136/149 SERIES



These 136/149 Series tips are designed for use with 4000 Series or 5700 Series handheld cutting torches. Engineered to deliver unbeatable quality and performance, these tips provide heavy preheat to facilitate cutting, slitting and beveling steel that is painted, rusted or has a heavily scaled surface.

FEATURES

- Cut through thicknesses ranging from 12" to 36"
- One-piece copper construction with brass tip nut
- Internal straight bore design with U-shape splines
- Precision-machined splines improve heat stability

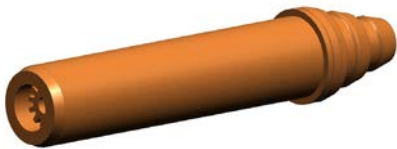
APPLICATIONS

- 4000 Series handheld cutting torches
- 5700 Series handheld cutting torches

Tip Series	Tip Size	Depth of Cut	Oxygen (PSIG)	Fuel Gas (PSIG)	Oxygen Flow (CFH)	Natural Gas Flow (CFH)
136/149	11	12"-19"	60-80	8-15	1,500-2,900	130-350
136/149	13	19"-28"	60-80	10-15	2,100-4,000	150-400
136/149	15	28"-36"	80-100	15-20	2,500-4,500	180-450

HANDHELD CUTTING TIPS

140 & 240 SERIES



QCC's tip mix 140 and 240 Series cutting tips are designed for use with our 4000 and 5700 Series handheld cutting torches. They feature a straight bore internal design and are engineered to provide heavy preheat.

FEATURES

- Cut through thicknesses ranging from 15" to 25"
- 140 Series has one-piece copper construction
- 240 Series has two-piece construction with a copper internal and chrome-plated copper external

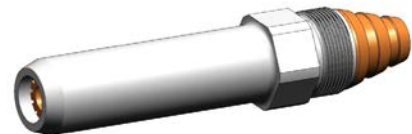
APPLICATIONS

- 4000 Series handheld cutting torches
- 5700 Series handheld cutting torches

Tip Series	Tip Size	Depth of Cut	Oxygen (PSIG)	Fuel Gas (PSIG)	Oxygen Flow (CFH)	Natural Gas Flow (CFH)
140 or 240	9	15"	60-85	12-15	1,300-1,500	100-120
140 or 240	11	19"	60-85	12-15	1,700-1,950	130-160
140 or 240	12	21"	60-85	12-15	1,800-2,250	165-180
140 or 240	13	25"	60-85	15-18	2,100-2,500	175-210
140 or 240	160*	15"	90-130	12-15	2,100-2,300	100-120
140 or 240	200*	19"	90-130	12-15	3,100-3,500	130-160
140 or 240	240*	25"	90-130	12-15	4,600-5,100	165-180

*High-speed model. Runs at higher pressure.

213 & 313 SERIES



QCC's tip mix 213 Series and 313 Series tips provide heavy preheat, feature a straight bore internal design and are precision machined to make quick work of cutting, slitting and beveling.

FEATURES

- Cut through thicknesses ranging from 20" to over 50"
- 213 Series has one-piece copper construction
- 313 Series has two-piece construction with a copper internal and chrome-plated copper external

APPLICATIONS

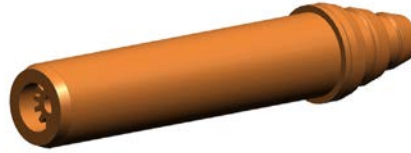
- 6000 Series handheld cutting torches
- 7000 Series handheld cutting torches

Tip Series	Tip Size	Depth of Cut	Oxygen (PSIG)	Fuel Gas (PSIG)	Oxygen Flow (CFH)	Natural Gas Flow (CFH)
213	10	20"-40"	80-120	15-20	4,000-5,500	130-350
213 or 313	15S	40"-50"	80-130	15-20	5,000-6,500	150-400
213	20S	Over 50"	80-120	15-20	6,000-8,000	180-450
213 or 313**	240*	15"-25"	75-150	15-20	2,500-4,500	130-350
213 or 313**	280*	25"-35"	100-150	15-20	4,500-6,500	150-400
213 or 313**	312*	35"-45"	125-150	15-20	7,000-8,500	180-450

*High-speed model. Runs at higher pressure. **Includes a built-in tip nut.

POWDER CUTTING TIPS

140 SERIES



For use with powder cutting torches to cut through non-ferrous and difficult to cut materials, these 140 Series tips are manufactured with the same quality and performance as our other tips. They're engineered to improve heat transfer and heat stability, as well as deliver heavy-preheat.

FEATURES

- Cut through thicknesses ranging from 15" to 25"
- One-piece copper construction
- Internal straight bore design
- Precision-machined 26° V-shaped splines

APPLICATIONS

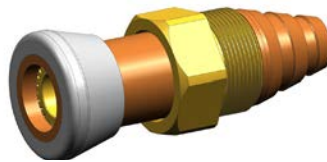
- 4900 Series powder cutting torches

Tip Series	Tip Size	Depth of Cut	Oxygen (PSIG)	Fuel Gas (PSIG)	Oxygen Flow (CFH)	Natural Gas Flow (CFH)
140	9	15"	60-85	12-15	1,300-1,500	100-120
140	11	19"	60-85	12-15	1,700-1,950	130-160
140	12	21"	60-85	12-15	1,800-2,250	165-180
140	13	25"	60-85	15-18	2,100-2,500	175-210
140	160*	15"	90-130	12-15	2,100-2,300	100-120
140	200*	19"	90-130	12-15	3,100-3,500	130-160
140	240*	25"	90-130	12-15	4,600-5,100	165-180

*High-speed model. Runs at higher pressure.

SCARFING TIPS

250 SERIES



Our complete line of 250 Series scarfing tips is engineered to deliver outstanding quality and performance. When used in conjunction with scarfing torches, these tips remove defects and treat the surface of steel. They feature a two-piece design and provide heavy preheat.

FEATURES

- Treat surface widths of either 2½" or 3⅞"
- Two-piece with brass internal and copper external
- Internal tapered bore design
- Precision-machined square-shaped splines improve heat transfer and flame stability
- Include a brass tip nut

APPLICATIONS

- 6000 Series scarfing torches
- 7000 Series scarfing torches

For more model information —
call 440.255.0606 or visit qccmfg.com

Tip Series	Tip Size	Scarf Width	Oxygen (PSIG)	Fuel Gas (PSIG)	Oxygen Flow (CFH)	Natural Gas Flow (CFH)
250	18	Up to 2½"	80-120	15-20	4,000-5,000	130-350
250	20	Up to 3⅞"	80-120	15-20	5,000-7,000	130-350

MACHINE CUTTING TIPS

139 SERIES



Our tip mix 139 Series tips are designed for use in conjunction with tip mix-style 524 Series machine cutting torches. These tips feature a two-piece design with a brass internal and either a copper external (tip sizes 0 thru 7) or a chrome-plated copper external (tip sizes 8 thru 11).

FEATURES

- Cut through thicknesses ranging from 1/2" to 20"
- Cutting speed ranges from 2" to 26" per minute
- Thick, heavy-duty external wall construction
- Precision-machined 22° V-shaped splines for maximum heat transfer

APPLICATIONS

- 524 Series machine cutting torches

Tip Series	Tip Size	Depth of Cut	Oxygen (PSIG)	Fuel Gas (PSIG)	Oxygen Flow (CFH)	Fuel Gas Flow (CFH)	Cutting Speed (IPM)
139	0	1/2"	30-55	12-15	60-80	13-18	21-26
139	1	3/4"	30-55	12-15	110-130	13-18	20-25
139	2	1"	40-50	12-15	120-140	13-18	18-23
139	3	2"	55-65	15-18	175-195	20-25	13-17
139	4	3"	55-65	15-18	275-295	20-25	8-15
139	5	4"	55-65	15-18	315-325	20-25	7-13
139	6	6"	60-70	15-18	450-480	30-35	6-10
139	7	8"	60-70	15-18	590-840	30-35	5-7
139	8	12"	70-80	18-22	900-970	30-35	4-6
139	9	16"	70-80	18-22	1,480-1,560	40-55	4-6
139	10	18"	70-80	18-22	1,890-2,240	40-55	2-4
139	11	20"	60-70	18-22	2,400-2,750	40-55	2-4

CUSTOM-MADE TO YOUR APPLICATION

Everything we carry is manufactured in-house by our team of highly skilled technicians. This provides us with the ability to modify and fine-tune any of our products for any application. Contact our team today to learn more about our customization capabilities.



MACHINE CUTTING TIPS

140 & 240 SERIES



QCC's 140 Series and 240 Series tip mix-style cutting tips feature thick, heavy wall construction are for use with our 524 Series tip mix-style machine cutting torches without the use of an auxiliary preheat device.

FEATURES

- Cut through thicknesses ranging from 15" to 25"
- 140 Series has one-piece copper construction
- 240 Series has two-piece construction with a copper internal and chrome-plated copper external

APPLICATIONS

- 524 Series machine cutting torches
- Emergency cutoff torches

Tip Series	Tip Size	Depth of Cut	Oxygen (PSIG)	Fuel Gas (PSIG)	Oxygen Flow (CFH)	Natural Gas Flow (CFH)
140 or 240	9	15"	60-85	12-15	1,300-1,500	100-120
140 or 240	11	19"	60-85	12-15	1,700-1,950	130-160
140 or 240	12	21"	60-85	12-15	1,800-2,250	165-180
140 or 240	13	25"	60-85	15-18	2,100-2,500	175-210
140 or 240**	160*	15"	90-130	12-15	2,100-2,300	100-120
140 or 240**	200*	19"	90-130	12-15	3,100-3,500	130-160
140 or 240**	240*	25"	90-130	12-15	4,600-5,100	165-180

*High-speed model. Runs at a higher pressure. **Includes a built-in tip nut.

8090 SERIES



Engineered for heavy plate cutting and beveling, our pre mix 8090 Series tips feature ultra-smooth cutting bores for efficient gas flow, operate on propane/natural gas and are for use with pre mix machine torches.

FEATURES

- Cut through thicknesses ranging from 8" to over 25"
- One-piece with bronze internal and copper external
- V-shaped (sizes 0-1) or U-shaped (sizes 2-4½) splines
- Cutting bores have a mirror-like finish for smoother cuts with minimal kerf

APPLICATIONS

- 80 Series machine cutting torches

For more model information —
call 440.255.0606 or visit qccmfg.com

Tip Series	Tip Size	Depth of Cut	Oxygen (PSIG)	Preheat Oxygen (PSIG)	Fuel Gas (PSIG)	Fuel Gas Flow (CFH)	Cutting Speed (IPM)
8090	0	8-12"	30-60	20-40	10-15	55-105	3-6
8090	1	8-16"	30-60	20-50	10-20	55-125	3-6
8090	2	12-20"	25-60	25-50	10-20	55-125	2-6
8090	3	16-25"	25-50	25-50	10-20	55-125	1½-4
8090	4	20-25"	25-90	25-50	10-20	55-125	1-3
8090	4½	Over 25"	40-90	25-50	10-20	55-125	1-3

MACHINE CUTTING TIPS

QC SERIES



Our patented post mix QC Series tips are engineered to be the most efficient and effective machine cutting tips in the industry. Specifically for caster cutoff systems, these tips feature superior flame definition and concentration to deliver narrower cuts with smoother cut faces, minimal kerf and reduced top rounding.

FEATURES

- Cut through thicknesses ranging from 10" to over 40"
- Two-piece construction with brass internal and chrome-plated brass external
- Precision-machined to increase cutting speeds
- 50% lower preheat pressure settings
- 24% less oxygen and 23% less fuel consumption

APPLICATIONS

- QC Series machine cutting torches
- Emergency cutoff torches

Tip Series	Tip Size	Depth of Cut	Oxygen (PSIG)	Preheat Oxygen (PSIG)	Fuel Gas (PSIG)	Cutting Speed (IPM)	Tip Standoff	Cutting Oxygen (CFH)	Preheat Oxygen (CFH)	Natural Gas Flow (CFH)
2QC1	110	10"	120	6-10	6-10	6"-10"	4"-8"	1,350	340-450	180-240
2QC1	130	10"-20"	120	6-10	6-10	10"-14"	4"-8"	1,800	340-450	180-240
2QC1	150	20"-25"	120	6-10	6-10	6"-10"	4"-8"	2,600	340-450	180-240
2QC1	170	20"-25"	120	6-10	6-10	6"-10"	4"-8"	3,000	340-450	180-240
2QC2	200	25"-30"	125	6-10	6-10	4"-6"	5"-9"	3,000	340-450	180-240
2QC2	230	30"-40"	135	6-10	6-10	3"-6"	5"-9"	5,200	340-450	180-240
2QC2	260	Over 40"	135	6-10	6-10	2"-3"	5"-9"	7,000	340-450	180-240

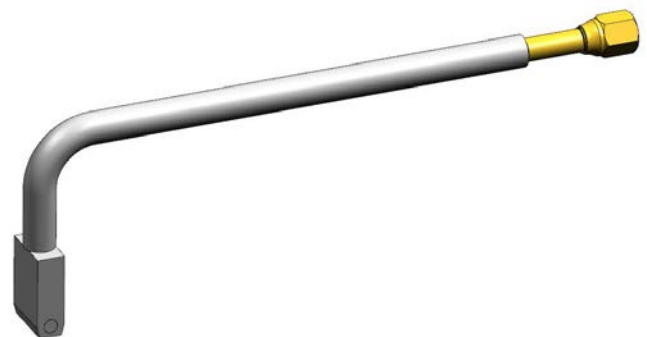
THERMITE HEATING TIPS

700 SERIES

QCC's thermite heating tips allow operators to apply the required amount of BTUs precisely between rail ends for effective and efficient preheating during the thermite welding process. Featuring stainless steel construction, our exclusive tips deliver even preheat, complete from top to bottom, throughout each rail to ensure a durable and long lasting weld.

FEATURES

- Deliver the required amount of BTUs for preheating during thermite welding
- Provide even preheat throughout both rail ends
- Stainless steel and brass construction
- Precision-machined to maximize gas delivery and efficiency



Model Number	Oxygen (PSIG)	Fuel Gas (PSIG)
2SCT777	60	15

PORTABLE TRACK CUTTING MACHINES

TRACTORS & KITS

Portable tractors feature all metal components, including a steel frame, welded steel uni-body construction with a powder coat finish and stainless steel drive wheels and casters. The 4" diameter drive wheels are knurled for positive traction and are protected by full-coverage stainless steel heat shields. The caster wheels can be easily locked into position for straight line cutting or left freewheeling for circle cuts or welds. The belt driven tractors are powered by a reliable 110V DC electric motor, come with a solid-state control board and include a variable 2-speed controller.



FEATURES

- Belt/gear drive for ultra-smooth operation
- Exclusive edge mount gear rack design eliminates play for "wobble free" operation
- Cool running permanent magnet DC motor with synthetic oil filled transmission for long service life
- Welded steel body construction with full-coverage heat shields mounted on each side
- Paddle activated two hose block for preheat control
- Conveniently positioned toggle switches for easy control
- Variable 2-speed controller (0-40"/min. or 0-11"/min.)
- Forward, neutral and reverse directional switch
- Detachable 25 ft. power cord
- Available with fixed wheels or swivel casters

SPECIFICATIONS

- Cutting capacity: up to 30 in./762 mm
- Weight: 32 lbs./14.5 kg
- Length: 15 in./281 mm
- Width: 7¼ in./184 mm
- Height: 6¾ in./162 mm

ACCESSORIES

- Machine torches
- Tracks
- Rigging kits
- Individual components

Kit Number	Tractor	Rigging Kit	Track	Torch
2SCM1000	With Swivel Casters	—	—	—
2SCM2500	With Swivel Casters	Deluxe Rigging Kit	—	—
2SCM2502	With Swivel Casters	Deluxe Rigging Kit	6 ft. of Standard Track	—
2SCM2503	With Swivel Casters	Deluxe Rigging Kit	6 ft. of Standard Track	524 Series Machine Torch
2SCM2504	With Swivel Casters	Deluxe Rigging Kit	6 ft. of Standard Track	524 Series Machine Torch
2SCM2505	With Swivel Casters	Welding/Plasma Rigging Kit	6 ft. of Standard Track	—
2AMC1000	With Fixed Wheels	—	—	—
2AMC2500	With Fixed Wheels	Deluxe Rigging Kit	—	—
2AMC2502	With Fixed Wheels	Deluxe Rigging Kit	6 ft. of Standard Track	—
2AMC2503	With Fixed Wheels	Deluxe Rigging Kit	6 ft. of Standard Track	524 Series Machine Torch
2AMC2504	With Fixed Wheels	Deluxe Rigging Kit	6 ft. of Standard Track	524 Series Machine Torch
2AMC2505	With Fixed Wheels	Welding/Plasma Rigging Kit	6 ft. of Standard Track	—

PORTABLE TRACK CUTTING MACHINES

TRACKS

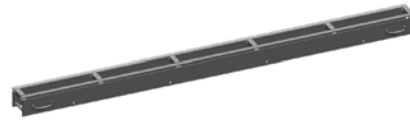
Tracks guide our portable cutting machine tractors for consistent cuts and welds. Our tracks are made from heavy-duty galvanized steel, feature a "V" groove design for precise straight-line travel and can be interlocked and stacked together for longer lengths of travel.



STANDARD TRACKS

- Tracks lay flat on surface
- Crossbar supports retain rigidity and shape

Model Number	Track Size
2SCM2600	6 ft.
2SCM2601	7½ ft.
2SCM2602	9 ft.
2SCM2603	12 ft.



RAISED TRACKS

- 6" tall side walls increase rigidity for operation over surface gaps
- Lightweight design is easy to transport

Model Number	Track Size
2SCM2610	6 ft.
2SCM2611	7½ ft.
2SCM2612	9 ft.
2SCM2613	12 ft.



RAISED INSULATED TRACKS

- 4" tall side walls increase rigidity for operation over surface gaps
- Ceramic insulation for high heat applications

Model Number	Track Size
2SCM2620	6 ft.
2SCM2621	7½ ft.
2SCM2622	9 ft.
2SCM2623	12 ft.

RIGGING KITS

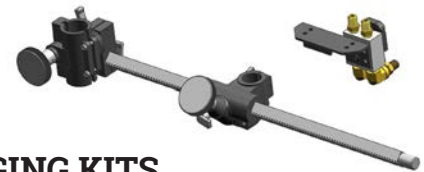
Our rigging kits eliminate the guesswork. They include everything you need to properly equip your portable track cutting machine for the required application. Every kit comes with our exclusive edge-mounted gear rack to eliminate play for "wiggle free" operation.



STANDARD RIGGING KITS

- Mount block for tractor
- 1¾" machine torch holder with vertical adjustment
- 24" long gear rack for lateral torch movement

Model Number	Rigging Kit
2SCM2575	Single Kit (1 holder)
2SCM2552	Dual Kit (2 holders)



DELUXE RIGGING KITS

- Include everything in Standard Rigging Kits
- One 2 hose flip valve (2 hoses total)
- Two 3 ft. long synthetic rubber grade "T" hoses

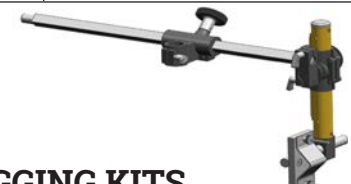
Model Number	Rigging Kit
2SCM2572	Single Kit (2 hoses)
2SCM2551	Dual Kit (4 hoses)



PLASMA RIGGING KITS

- Mount block for tractor
- Gun and torch clamp plate with height adjustment
- 24" long gear rack for lateral torch movement

Model Number
2SCM2570



MIG WELDING RIGGING KITS

- Mount block for tractor
- Gun and torch clamp with height and angle adjustment
- 24" long gear rack for lateral torch movement

Model Number
2SCM2571

PORTABLE TRACK CUTTING MACHINES

COMPONENTS

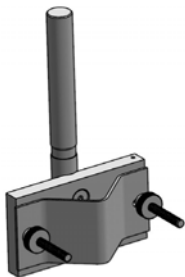
Portable track cutting machines can be fitted with a wide variety of different rigging, valves and gear racks to support oxy-fuel cutting, arc welding or plasma cutting. These components are available individually so portable track cutting machines can be customized specifically for the application at hand.



TORCH HOLDERS

- Fit 1 3/8" diameter machine cutting torches
- For vertical torch adjustment

Model Number
2SCM0800



WELDING/ PLASMA HOLDERS

- Mount welding and plasma torches to connecting block
- Fit most shapes, types and brands of torches

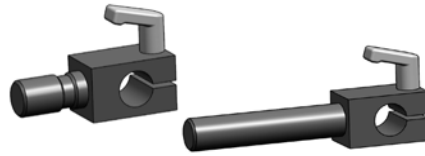
Model Number
2SCM0815



CONNECTING BLOCKS

- Attach cutting torch or welding and plasma holder to gear rack
- Two 3/4" diameter female connections

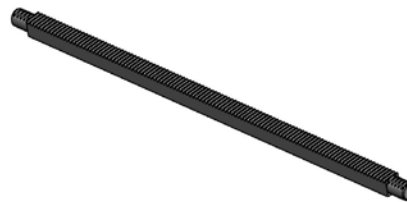
Model Number
2SCM0518



EXTENSION BLOCKS

- Attach welding/plasma holder to connecting block
- One 3/4" diameter male and one 3/4" diameter female connection

Model Number	Description
2SCM0520	2 1/4" OAL
2SCM0521	4" OAL



GEAR RACKS

- Heavy-duty steel with corrosion-resistant zinc-plated finish
- Precision-machined 32-pitch straight teeth for smooth operation

Model Number	Length
2SCM2650	24 in.
2SCM2630	36 in.
2SCM2648	48 in.



POWER CORDS

- Oil-resistant 8-gauge cord with molded water-resistant plug
- Meet SJOOW standards

Model Number	Length
2SCM2735	25 ft.



CROSS SLIDES

- For horizontal torch adjustment
- Convenient hand wheel makes adjustments quick and easy

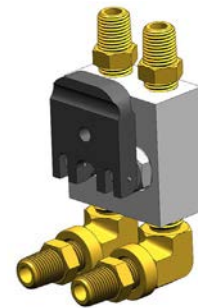
Model Number
2SCM0750



HOSES

- Oil-resistant synthetic grade rubber
- Two 3 ft. long grade "T" hoses

Model Number
2SCM0400



HOSE BLOCKS

- Mount to tractor to prevent hoses from pulling on hoses directly connected to torch
- Blocks with flip valves eliminate need to readjust valves on torch

Model Number	Description
2SCM2655	2 hose w/flip valve
2SCM2660	3 hose
2SCM2661	3 hose w/flip valve
2SCM2662	3 hose rack mount
2SCM2663	3 hose rack mount w/flip valve

GAS DISTRIBUTION SYSTEMS

MANIFOLDS

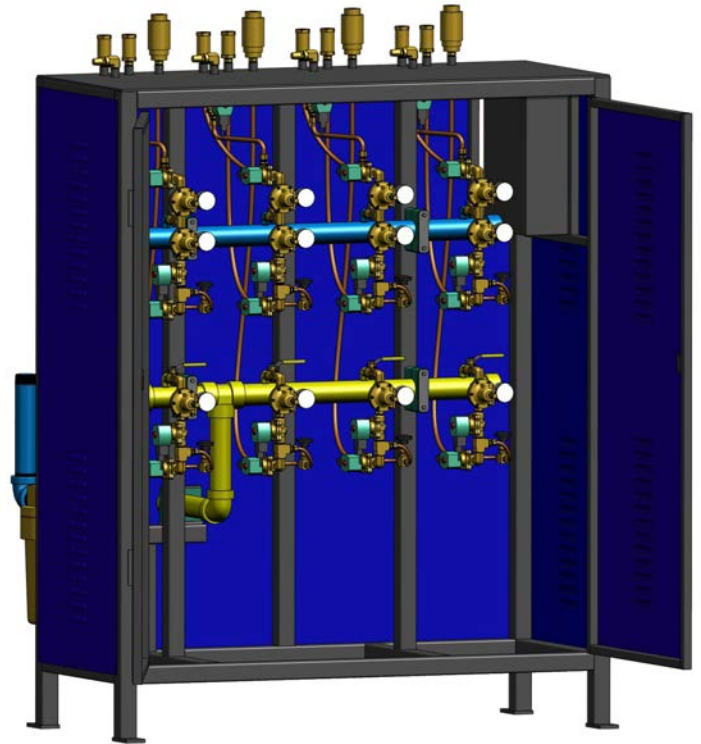
These manifold systems are engineered to deliver gas safely and efficiently from central piping systems to custer cutting, hand cutting, brazing or scarfing workstations. QCC's manifolds are designed and manufactured to your application's requirements and are available with a long list of optional features and accessories.

FEATURES

- Engineered in-house prior to build
- Heavy-duty steel frame
- High quality components
- Built with up to 2" headers
- Tested at QCC facility prior to delivery

OPTIONS

- Completely enclosed, vented and wall mounted cabinet
- Prewired to include electric enclosure and panel
- Remote operated auto pilot system
- Remote controlled solenoids
- Individual locking shut off valves for each strand
- On-site technician for preliminary installation



For more model information —
call 440.255.0606 or visit qccmfg.com

STATION DROPS

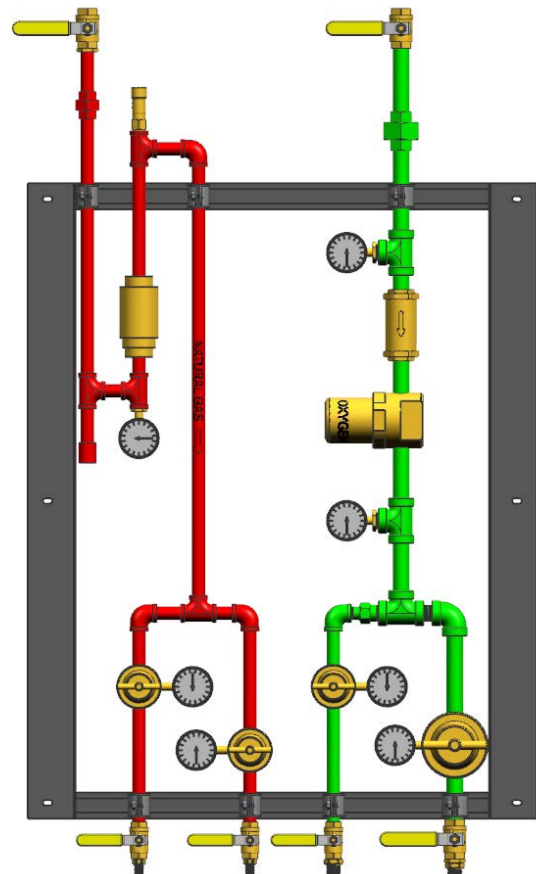
Our station drops are designed to deliver gas safely and efficiently to hand cutting torches, machine cutting torches, powder torches and more. QCC station drops come with gas specific CGA connections, internal check valves and are available in several standard units or can be custom designed and manufactured to your unique specifications.

FEATURES

- Sturdy steel frame construction
- High quality components
- Pipes and components sized appropriately for your application
- Conforms to CGA and NFPA specifications
- Fuel and oxygen lines painted to desired color standards
- Tested at QCC facility prior to delivery

OPTIONS

- Available with a wall mount or portable frame



For more model information —
call 440.255.0606 or visit qccmfg.com

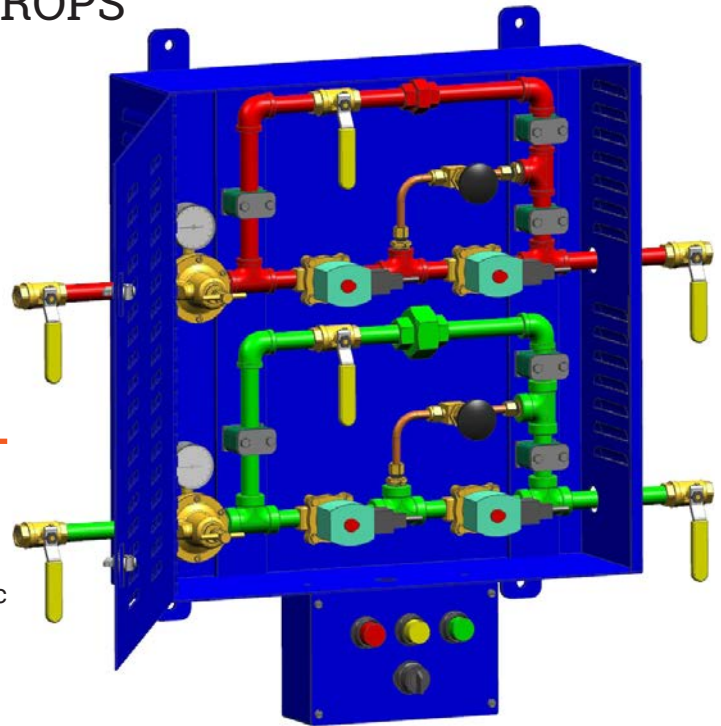
GAS DISTRIBUTION SYSTEMS

HIGH EFFICIENCY STATION DROPS

High efficiency station drops drastically reduce gas consumption, temperatures and emissions. These advanced oxy-fuel distribution drop systems feature a built-in pilot mode for standby emergency torches in post mix style caster cutoff areas. In pilot mode, the torch has a preset continuous pilot flame. If the torch is required for emergency purposes, a simple activation of the manual switch turns the torch into full cutting mode. Once cutting is complete, the operator returns the switch to the pilot setting.

FEATURES

- Completely enclosed, vented and wall mounted cabinet
- Access door and latches keep contents secure
- Off/Pilot/Cutting switch with corresponding lights
- Manual bypass supply lines available in event of electric power loss
- Fuel and oxygen lines painted to desired color standards
- Tested at QCC facility prior to delivery



For more model information —
call 440.255.0606 or visit qccmfg.com

OPTIONS

- Remote torch stand-off bracket automatically switches between pilot and cutting modes

GAS SYSTEM ACCESSORIES

GAS FILTERS

Prevent dust, rust, scale and other impurities from damaging downstream equipment in your gas distribution system with an in-line gas filter from QCC. Our filters feature a 40-micron replaceable bronze filter element and are for use with oxygen, fuel and inert gases.

FEATURES

- T-style design allows filter to be replaced without removal
- Durable brass construction
- Easy to replace 40 micron sintered bronze filter element
- Can be mounted in a vertical or horizontal position
- Low initial pressure drop within capacity
- Replacement filters available (sold separately)



Model Number	Gas	Inlet/Outlet	Male/Female	Air Flow (SCFH)	Max Pressure (PSI)	Replacement Cartridge
2HLF2360	Fuel	1/2" NPT	Female	14,000	350	9HLF2600
2HLF2380	Oxygen/Inert	1/2" NPT	Female	14,000	350	9HLF2600
2HLF2560	Fuel	1" NPT	Female	25,000	350	9HLF2610
2HLF2580	Oxygen/Inert	1" NPT	Female	25,000	350	9HLF2610
2HLF2760	Fuel	2" NPT	Female	100,000	350	9HLF2700
2HLF2780	Oxygen/Inert	2" NPT	Female	100,000	350	9HLF2700

Call 440.255.0606 or visit qccmfg.com for more information today!

GAS SYSTEM ACCESSORIES

CHECK VALVES

Check valves are critical when using gas equipment. These valves fully open with little pressure and immediately close when reverse flow starts, resulting in a total shut-off. This prevents back flow from damaging your equipment and reduces the chance of potentially disastrous accidents from occurring.



FEATURES

- Solid brass construction body
- High-quality spring-loaded stainless steel brass valve

Model Number	Inlet	Male/Female	Outlet	Male/Female	Gas
14300161	"B" Hose L. Hand	Male	"B" Hose L. Hand	Female	Fuel
14300162	"B" Hose R. Hand	Male	"B" Hose R. Hand	Female	Inert
14300383	"B" Hose L. Hand	Male Swivel	"B" Hose R. Hand	Male	Fuel
14300384	"B" Hose L. Hand	Female Swivel	"B" Hose L. Hand	Male	Fuel
2SCV-60	1/2" NPT	Male	"C" Hose R. Hand	Male	Inert
2SCV-61	1/2" NPT	Male	"C" Hose L. Hand	Male	Fuel
2SCV-62	1/2" NPT	Male	1/2" NPT	Female	Fuel/Inert
2SCV0500	1/2" NPT	Female	1/2" NPT	Female	Fuel/Inert
2SCV32	"C" Hose R. Hand	Male	"C" Hose R. Hand	Female	Inert
9-CV500BV-1	1/2" NPT	Female	1/2" NPT	Female	Fuel/Inert
9-CV750BN1X	3/4" NPT	Female	3/4" NPT	Female	Fuel/Inert
9-CV1000BV.15X	1" NPT	Female	1" NPT	Female	Fuel/Inert
9-CV1000BV3X	1" NPT	Female	1" NPT	Female	Fuel/Inert

FLASH ARRESTORS

Our high-quality flash arrestors protect you and your equipment from dangerous reverse gas flow and flashbacks by arresting the flame when using flammable gases. They have a high-flow capacity and feature three safety elements to prevent equipment damage and catastrophic accidents.

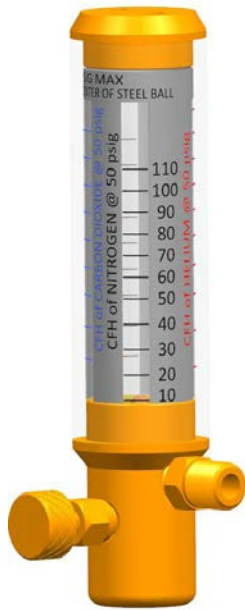


FEATURES

- Solid brass or solid stainless steel construction
- Temperature sensitive cutoff valve extinguishes flashbacks
- Spring-loaded check valve prevents slow or sudden reverse gas flow
- 100 micron inlet filter protects eliminates debris and contamination
- Stainless steel sintered filter element
- May be mounted in any position or orientation

Model Number	Inlet	Female/Male	Outlet	Female/Male	Gas
14301651	"B" Hose L./R. Hand	Female Swivel	"B" Hose L./R, Hand	Male	Fuel/Oxygen
14301652	"B" Hose R. Hand	Female Swivel	"B" Hose R. Hand	Male	Oxygen
14301655	"B" Hose L. Hand	Female Swivel	"B" Hose L. Hand	Male	Fuel
2FLS8010	1/2" NPT	Female	1/2" NPT	Female	Fuel
2FLS8020	1/2" NPT	Female	1/2" NPT	Female	Oxygen
2FLS8530	1" NPT	Female	1" NPT	Female	Gas
2FLS8530-1	1" NPT	Female	1" NPT	Female	Oxygen

FLOWMETERS



QCC's patented flowmeters monitor the flow of multiple gases, eliminating the need to change equipment. Featuring an innovative rotating design, our exclusive flowmeters can be rotated to the left or right, depending on the configuration needed. To use, simply rotate the external shell until the proper gas is displayed.

FEATURES

- Patented design is calibrated for use with multiple gases
- External shell rotates to measure the desired gas
- Calibrated scale printed on inside of external shell to prevent damage
- Internal float moves up and down inside transparent tube
- Heavy-duty brass ¼" inlet and outlet construction
- Measures gases within +/- 4% of full range (exceeds U.S. Navy requirement of +/- 5%)

Model Number	Gas Mixture
2FLM3095	Mixed gas (95% helium, 5% argon)
2FLM3200	Three gases (argon, carbon dioxide, nitrogen)
2FLM3225	Mixed gas (75% helium, 25% argon)

POWDER DISPENSERS

QCC's powder dispensers supply powder cutting torches and tips with iron powder. Our hoppers are completely pneumatic, feeding torches under constant pressure to ensure an accurate and uniform flow of powder. These heavy-duty steel powder dispensers feature a powder screen, air dryer/filter, bleeder, a relief valve to protect against over pressurization and a built-in regulator with an encapsulated seat to control pressure.

WALL MOUNTED DISPENSERS

- Brass, stainless steel and steel construction
- Durable fixed mounted design
- 100 lb. powder capacity

Model Number
2SCM4895

PORTABLE DISPENSERS

- Brass, stainless steel and steel construction
- Durable hand-truck style design with 10" rubber wheels
- 100 lb. powder capacity

Model Number
2SCM4890

IRON POWDER

- 50 lb. plastic pail

Model Number
14304903



INDUSTRIES

A leader in oxy-fuel cutting technology, QCC has been supplying multiple industries with the cutting torches and tips they require for over 45 years. Critical for shaping metal, QCC's oxy-fuel equipment is engineered and manufactured to be of the highest of quality. Our innovative designs and continuous improvement lead the industry in product development, quality and performance. Every component is expertly crafted from high-grade materials, features heavy-duty construction and is designed and built to withstand high pressure and high heat for long periods of time. QCC offers a large selection of products for the following industries.



FOUNDRIES



RAILROAD



SCRAP YARDS



SERVICE CENTERS



SHIPYARDS



STEEL MILLS

END USES

As a premier supplier of cutting torches, tips and other oxy-fuel components, QCC leverages decades of engineering and manufacturing experience to exceed needs and demands. Our comprehensive selection of oxy-fuel equipment is available for a wide variety of applications, including cutting, scarfing and more. As a state-of-the-art manufacturer, we do our best to pair the right equipment with the right operation. This includes customizing any of our products to meet each application's specific needs. From large companies to local entrepreneurs, QCC's innovative and high-quality products deliver the performance shops demand.



CASTER CUTTING



EMERGENCY



FABRICATION



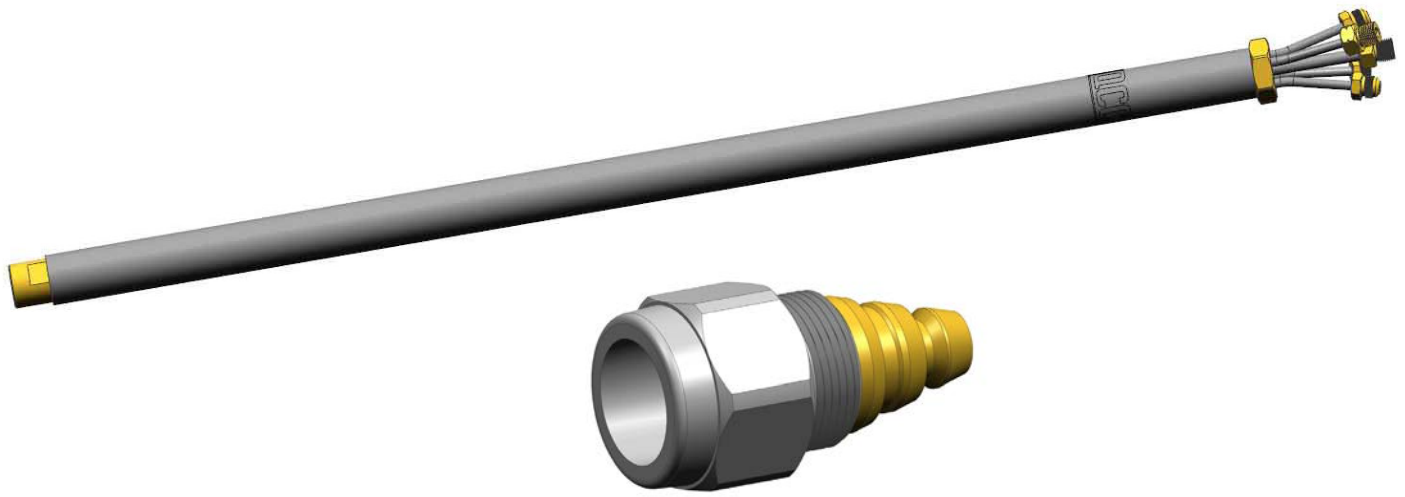
POWDER CUTTING



SCRAP CUTTING



STEEL CONDITIONING



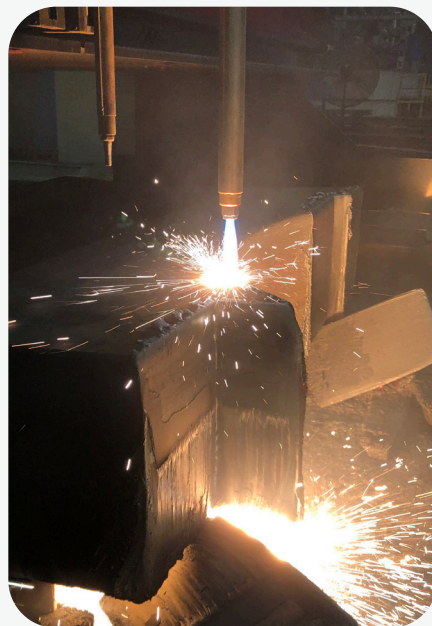
QCC'S PATENTED CASTER CUTTING EQUIPMENT IS THE MOST EFFICIENT IN THE OXY-FUEL INDUSTRY

Engineered to be used in caster cutoff systems, QCC's QC Series post mix machine cutting torches and post mix machine cutting tips successfully cut material over 70" thick. Designed to be used in conjunction with one another, our QC Series torches and tips are specially engineered to be the most effective and efficient post mix machine cutting equipment in the industry. Call **440.255.0606** or visit **qccmfg.com** to learn more today.



INCREASE SPEED

Patented components are engineered and designed to increase cutting speeds



IMPROVE PERFORMANCE

Eliminate flashbacks, reduce flying debris and lower preheat settings by 50%



REDUCE CONSUMPTION

Exclusive designs consume 24% less oxygen and 23% less fuel than comparable torches

Contact us today at **440.255.0606** or **info@qccmfg.com** to learn more about our patented caster cutting equipment.